

Use "Capture" to import video that is currently being recorded.

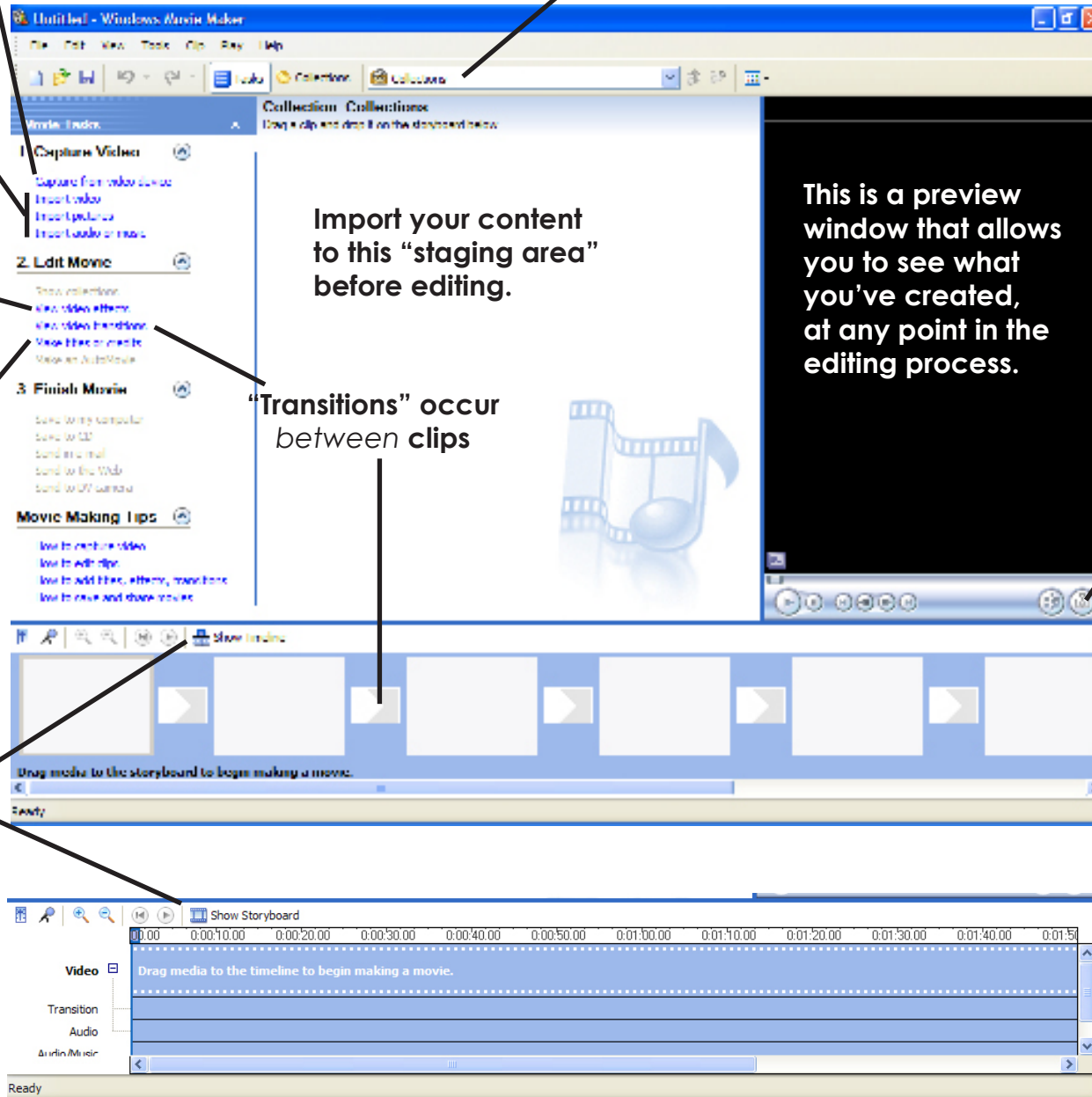
You can develop several collections to organize your content.

Use these three functions to bring your content to the Collections area.

"Effects" change the way pictures and video are displayed.

Follow this path for adding text-only clips or to add text to existing clips.

Click on this "Show" button to toggle back and forth between Timeline and Storyboard view.

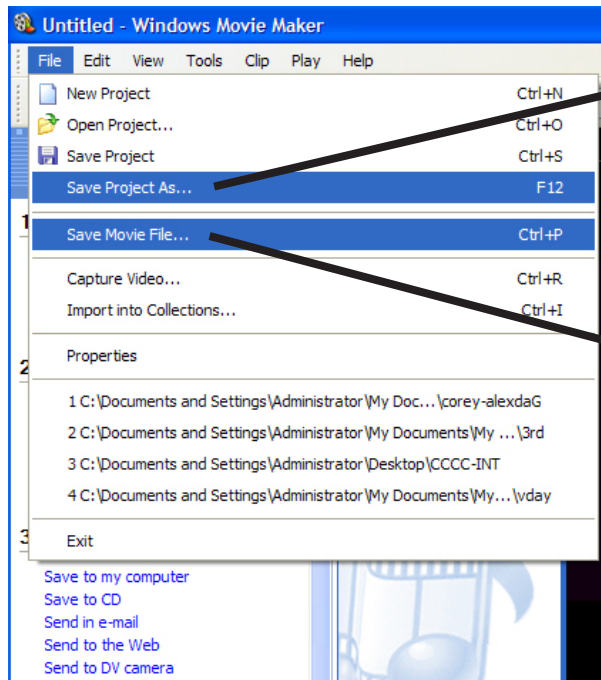


Import your content to this "staging area" before editing.

"Transitions" occur between clips

This is a preview window that allows you to see what you've created, at any point in the editing process.

Use this button to create a still image, a "snapshot," from your video.



Save your EDITING PROGRAM file (.mswmm) here. Be sure to save the file and all of the your content in the same place. The MSWMM file must accompany all of the video clips, images, and sound files until you create a movie file that blends them all together.

Save your work as a MOVIE (.wmv) here. This path will take you through a series of steps, prompting you to decide where to save it, in what quality, etc.

Each layer in the timeline indicates a source of content: video, audio, and text overlay. The video layer can be expanded to show added transitions and the audio embedded in the video clip (if any).

